

Upholstery Guide

All of our Upholstery is offered COM or from a selection of our in-house Velvets and Sheepskins.

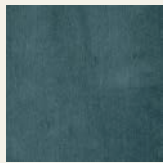
Velvets



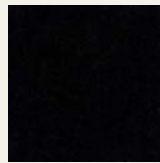
Amethyst
VEL015



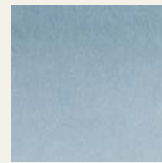
Antique Gold
VEL029



Bali
VEL019



Black
VEL009



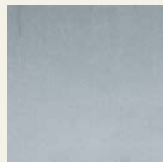
Blue Bonnet
VEL025



Coral
VEL022



Dark Grey
VEL021



Dove
VEL030



Emerald
VEL003



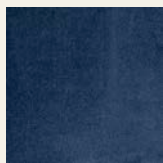
Grey Cloud
VEL020



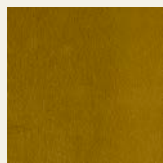
Jade
VEL032



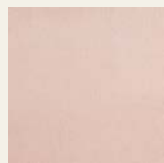
Mango
VEL013



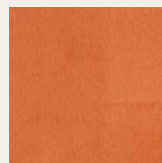
Mariner
VEL001



Mustard
VEL005



Rosewater
VEL026



Shrimp
VEL014



Snow
VEL010

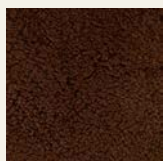


Tobacco
VEL007

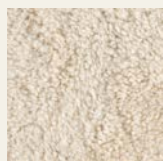


Wasabi
VEL004

Sheepskins - Only available on select designs.



Dark Brown,
Short



Cream,
Long

JULIANCHICHESTER.COM

LONDON | NEW YORK | HIGH POINT

Dining Chairs

Product Name	Yardage Required (COM)*	Additional Info**
<u>Bloomsbury Dining Chair</u>	2 yards	
<u>Bobbin Dining Chair - Spindle Back</u>	1 yard	
<u>Bobbin Dining Chair - Upholstered Back</u>	3 yards	
<u>Borge Dining Chair</u>	2 yards	
<u>Casper Chair</u>	1 yard	
<u>Chicken Dining Chair</u>	2 yards	
<u>Cow Dining Chair</u>	2 yards	
<u>Dakota Dining Chair</u>	2 yards	
<u>Dorothy Dining Chair</u>	2.5 yards	
<u>Emma Dining Chair</u>	3.5 yards	Nail trim and welt: Antique Brass, Polished Nickel
<u>Flamenco Chair</u>	3 yards	
<u>Klint Dining Chair</u>	3 yards	Nail trim and welt: Antique Brass, Polished Nickel
<u>Klint Dining Chair - Rattan Back</u>	1 yard	Nail trim and welt: Antique Brass, Polished Nickel
<u>Lille Dining Chair</u>	3 yards	
<u>London Dining Arm Chair</u>	3 yards	
<u>London Dining Side Chair</u>	2 yards	
<u>Luccio Dining Chair</u>	2 yards	
<u>Moose Dining Chair</u>	2 yards	
<u>Nasher Chair</u>	3 yards	

<u>Rodez Side Chair</u>	3 yards	
<u>Walt Chair</u>	1.5 yards	

Lounge Chairs

Product Name	Yardage Required (COM)*	Additional Info**
<u>Alice Chair</u>	4.5 yards	
<u>Bergamo Chair</u>	7 yards	
<u>Button Chair</u>	4 yards	
<u>Chagal Chair</u>	3 yards	
<u>Cow Lounge Chair</u>	5 yards	
<u>Dorothy Lounge Chair</u>	4 yards	
<u>Fig Chair</u>	4.5 yards	
<u>Gibbings Lounge Chair</u>	6 yards	
<u>Gibbings Slipper Chair</u>	4 yards	
<u>Gins Chair</u>	3.5 yards	
<u>Lille Lounge Chair</u>	6 yards	
<u>Marc's Chair</u>	3 yards	
<u>Nasher Chair</u>	3 yards	
<u>Poppin Chair</u>	6 yards	
<u>Sugar Chair</u>	3 yards	
<u>The Kings Chair</u>	5 yards	
<u>Toffee Chair</u>	3.5 yards	
<u>Turin Chair</u>	5 yards	

Benches

Product Name	Yardage Required (COM)*	Additional Info**
<u>Avellino Bench Large</u>	8 yards	
<u>Avellino Bench Medium</u>	6 yards	
<u>Bagend Bench</u>	2.5 yards	
<u>Elba Bench</u>	3 yards	
<u>Felix Bench</u>	2 yards	
<u>Felix Narrow Bench Large</u>	2.5 yards	
<u>Felix Narrow Bench Small</u>	1 yard	
<u>Hockney Bench</u>	3 yards	
<u>Rene Long Bench</u>	2 yards	
<u>Richter Bench</u>	3 yards	Standard with an attached boxed seat cushion with welt.

Ottomans & Stools

Product Name	Yardage Required (COM)*	Additional Info**
<u>Amalfi Ottoman</u>	4 yards	
<u>Avellino Stool</u>	3 yards	
<u>Chagal Ottoman</u>	1 yard	
<u>Fig Ottoman</u>	1 yard	
<u>Hockney Stool</u>	1.5 yards	
<u>Turin Ottoman</u>	1 yard	

Daybeds & Beds

Product Name	Yardage Required (COM)*	Additional Info**
<u>Avellino Daybed</u>	10 yards	
<u>Bobbin Bed King</u>	4 yards	
<u>Bobbin Bed Queen</u>	3 yards	
<u>Bobbin Bed Twin</u>	2 yards	
<u>Marc's Chaise</u>	6 yards	Bolsters are additional and not standard.
<u>Richter Bed King</u>	4 yards	
<u>Richter Bed Queen</u>	3 yards	
<u>Richter Bed Twin</u>	2 yards	
<u>Rita Four Poster Bed Queen</u>	3.5 yards	
<u>Vienna Four Poster Bed Queen</u>	3.5 yards	

Settees, Sofas & Chaises

Product Name	Yardage Required (COM)*	Additional Info**
<u>Amalfi Sofa</u>	12 yards	
<u>Elba Sofa</u>	9 yards	
<u>Grove Sofa</u>	14 yards	
<u>Lille Sofa</u>	18 yards	
<u>Marc's Daybed</u>	13 yards	Bolsters are additional and not standard.

Product Name	Yardage Required (COM)*	Additional Info**
<u>Parrot Sofa</u>	10 yards	
<u>Parrot Sofa Small</u>	7 yards	
<u>Porto Sofa</u>	6 yards	
<u>Roy Sofa</u>	16 yards	
<u>Wing Sofa</u>	15 yards	

Stools

Product Name	Yardage Required (COM)*	Additional Info**
<u>Bridge Counter Stool</u>	1 yard	
<u>Chicken Counter Stool</u>	2 yards	
<u>Dakota Counter Stool</u>	1.5 yards	
<u>Dorothy Counter/Bar Stool</u>	2.5 yards	
<u>Emma Counter/Bar Stool</u>	3 yards	Nail trim and welt: Antique Brass, Polished Nickel
<u>Lille Counter Stool</u>	3.5 yards	

*Yardage provided is based off a 54 Inch Wide Solid Fabric

**Unless otherwise instructed at the point of order, our upholsterer/s will, depending on the type and thickness of fabric/leather/velvet, use their own discretion when deciding how to proceed with placement, piping, studding etc.

JULIANCHICHESTER.COM

LONDON | NEW YORK | HIGH POINT